

PC-NC Series

818PC-NC/525PC-NC (Servo Motor Driven)

818PC-NCL/525PC-NCL/300PC-NCL

(Linear Motor Driven)

We will respond to the diverse needs of customers from flat plates to screws and long rotary machining.



MSG-525PC-NCL

Supports various type of Grinding Software
Surface/G-Code/Pitch/Creep
Automatic Dressing Cycle
Flat/Outer R/Inner R/ Taper

Additional unit

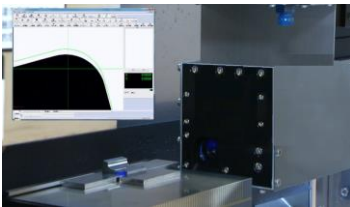
Double index device for 5-axis grinding



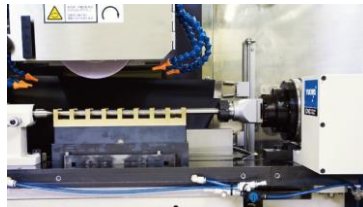
Pin grinding by grinding wheel side



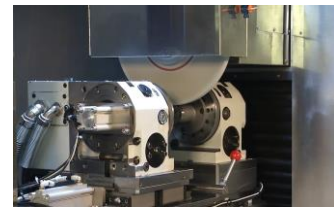
CCD camera on-board measurement



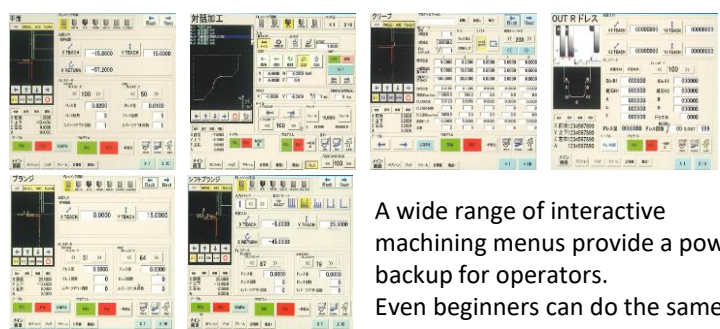
NC index device



Fixed rotation mechanism at both ends



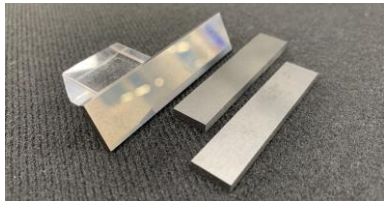
Operation interface



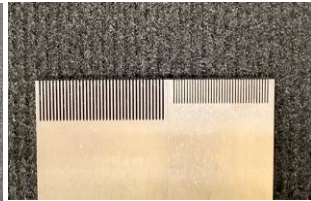
A wide range of interactive machining menus provide a powerful backup for operators. Even beginners can do the same processing as skilled workers.

Sample of grinding

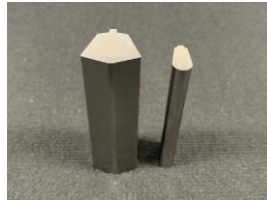
Six-sided Tooling Die Parts



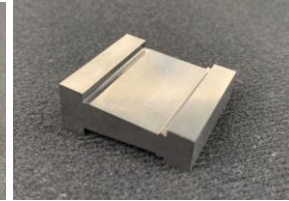
Fine Pitch Connector Core Pin



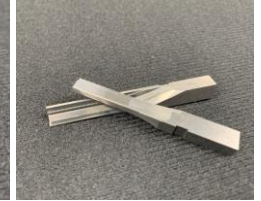
Mold forming Punch



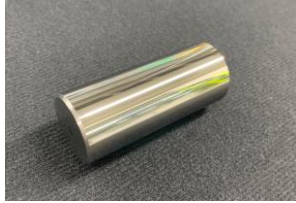
Mold die



IC Lead frame Punch



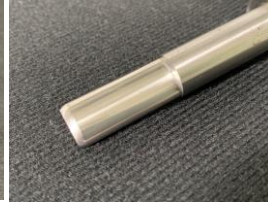
Mirror surface cylindrical core pin



Standard variant punch



Drawing punch



Micro screw core Pin



Tip drawing



Optional Accessories



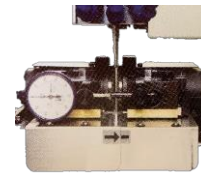
3point Dressing System
Part No. 3POINT



Rotary Dresser
Part No. ROTARYDRESS



Optidress
Part No. OPTIDRESS



Universal Twin
Rotary Dresser
Part No. UTRD



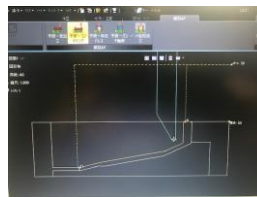
Air Spindle



13GAL Stainless Steel
Coolant Tank w/ Paper
Part No. MSTP-50



Dust Scoop Assy
Part No. DS



Mitsui Auto CAM Software
Part No. MACS2D

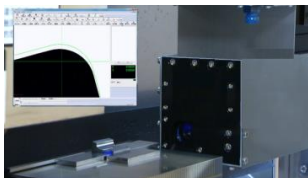


Centerless grinding device



NC Control rotation
device

Safety device



CCD camera



Spindle rotation indicator



Automatic Wheel Safety cover

※If you want another safety system, please contact us.

After service



Service Call
Video Call

Specifications		MSG-818PC-NC	MSG-818PC-NCL	MSG-525PC-NC	MSG-525PC-NCL	MSG-300PC-NCL
Capacity	Table Work Surface	8 × 19"	8 × 19"	10 × 21-1/2"	10 × 21-1/2"	12×24"
Table	Movement per Rev. of Hand Wheel	3-15/16"	3-15/16"	3-15/16"	3-15/16"	3-15/16"
	Table speed(average)	0-50ft/min	0-80ft/min	50ft/min	83ft/min	83ft/min
Head	Movement per Rev. of Hand Wheel	0.3/64"	0.3/64"	0.3/64"	0.3/64"	0.3/64"
	Minimum command increment	0.00001"	0.00001"	0.00001"	0.00001"	0.00001"
Wheel	Size	8 × 3/4 × 1-1/4"	8 × 3/4 × 1-1/4"	8×3/4×2"	8×3/4×2"	8×1/2×1-1/4"
	Spindle speed (50Hz/60Hz)	500-4000rpm	500-4000rpm	500-4000rpm	500-4000rpm	500-4000rpm
Motor	Spindle	1.5kw/2P V3	1.5kw/2P V3	2.2kw/2P V3	2.2kw/2P V3	2.2kw/2P V3
	Power Supply	11KVA	11KVA	15KVA	15KVA	18KVA
Floor Space	Width × Length × Height	100" × 63" × 71"	100" × 63" × 71"	118"×98-1/2"×86-1/2"	118"×98-1/2"×86-1/2"	127"×108"×87"
Total weight	Main unit	2,425lbs	2,425lbs	5080lbs	5080lbs	9720lbs



EcoMachineTools.com
Importing Reliable Grinding Machines
Call Us @ 770-279-2001